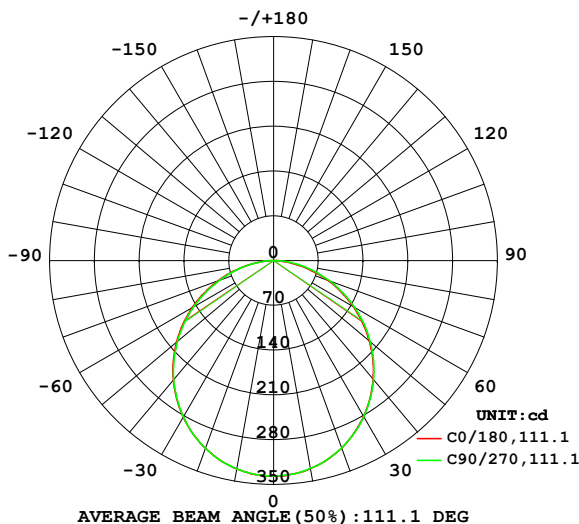


## LUMINAIRE PHOTOMETRIC TEST REPORT

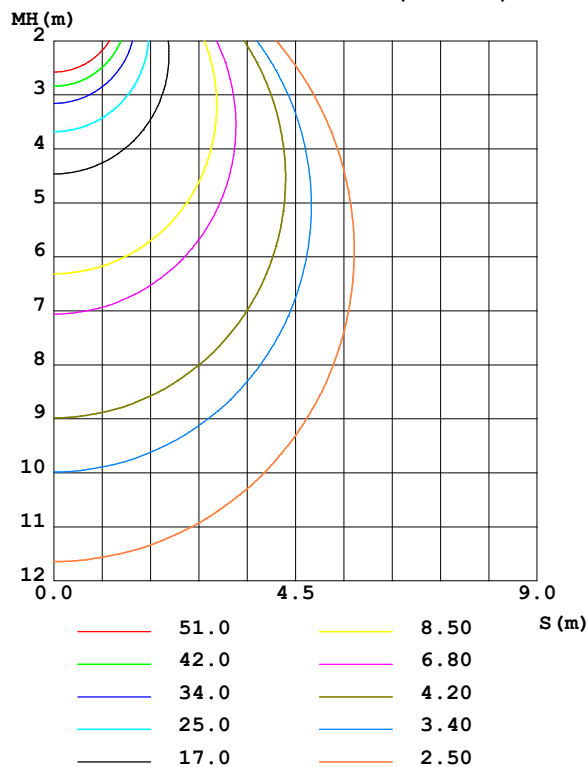
Test:U:119.83V I:0.1006A P:11.614W PF:0.9635 Freq:59.98Hz		
UTHDi:0.00% ITHDi:0.00% KDisp:0 Lamp Flux:951.003x1 lm		
NAME: VO-RP6W12-120-D-5WAY	TYPE:	WEIGHT:
SPEC.: 2700K 80	DIM.:	SERIAL No.:
MFR.: VOTATEC	SUR.:	Shielding Angle:

DATA OF LAMP		PHOTOMETRIC DATA				Eff: 81.88 lm/W
MODEL	VO-RP6W12-120-D-5WAY	I <sub>max</sub> (cd)	337.1	S/MH(C0/180)	1.25	
NOMINAL POWER(W)	12	LOR(%)	100.0	S/MH(C90/270)	1.25	
RATED VOLTAGE(V)	120	TOTAL FLUX(lm)	951.00	η UP,DN(C0-180)	0.0,50.3	
NOMINAL FLUX(lm)	951.003	CIE CLASS	DIRECT	η UP,DN(C180-360)	0.0,49.7	
LAMPS INSIDE	1	η up (%)	0.0	CIBSE SHR NOM	1.25	
TEST VOLTAGE(V)	120	η down (%)	100.0	CIBSE SHR MAX	1.35	

LUMINOUS INTENSITY DISTRIBUTION DIAGRAM



C0 PLANE ISOLUX DIAGRAM (UNIT:lx)



C Range: 0 - 360DEG  
C Interval: 22.5DEG  
Test Speed: HIGH  
Temperature: 24.3 °C  
Operators:  
Test Date: 2024-04-01

γ Range: 0 - 90DEG  
γ Interval: 1.0DEG  
Test System: EVERFINE GO-SPEX500\_V1 SYSTEM V2.00.460  
Humidity: 65.0%  
Test Distance: 3.080m [K=1.0000]  
Remarks:

## ZONAL FLUX DIAGRAM

## ZONAL FLUX DIAGRAM:

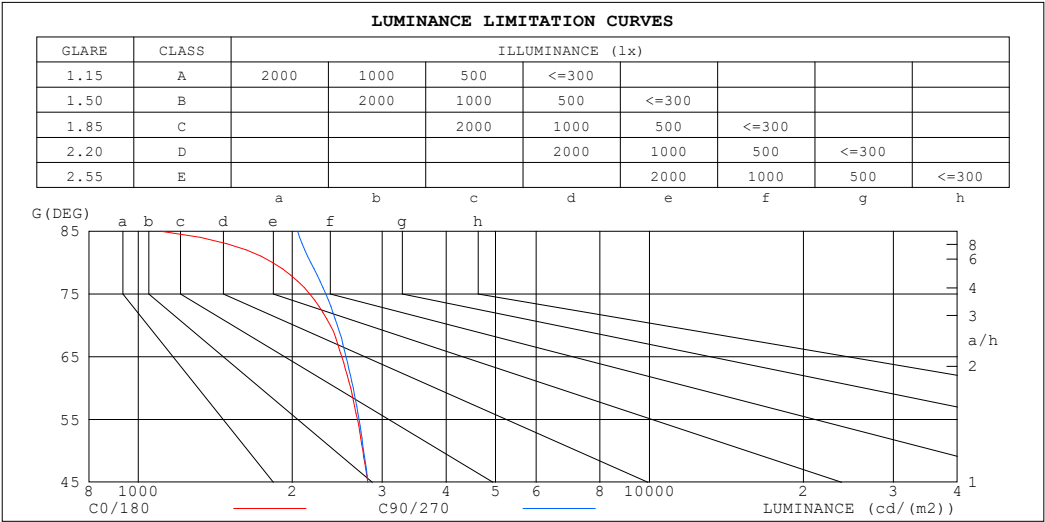
$\gamma$	C0	C45	C90	C135	C180	C225	C270	C315	$\gamma$	$\Phi$ zone	$\Phi$ total	%lum, lamp
10	330.5	330.5	330.0	330.0	330.8	330.4	330.8	330.6	0- 10	31.86	31.86	3.35,3.35
20	311.8	312.1	311.5	311.0	312.3	312.2	312.1	311.6	10- 20	91.04	122.9	12.9,12.9
30	281.6	282.6	282.0	281.2	282.8	282.3	282.2	281.8	20- 30	137.4	260.3	27.4,27.4
40	242.0	244.0	243.2	242.3	244.1	243.5	242.9	242.2	30- 40	164.8	425.1	44.7,44.7
50	195.4	198.1	197.3	196.3	198.3	197.1	196.1	195.1	40- 50	170.2	595.3	62.6,62.6
60	143.9	147.0	146.4	145.3	146.7	145.1	143.9	143.1	50- 60	153.2	748.5	78.7,78.7
70	89.82	93.49	93.26	92.38	92.56	90.62	89.45	88.75	60- 70	117.0	865.6	91,91
80	35.17	40.43	42.01	40.62	38.75	38.00	38.13	35.88	70- 80	68.16	933.7	98.2,98.2
90	0.3959	0.4119	0.9551	0.4067	0.2601	0.2724	0.2916	0.2680	80- 90	17.28	951.0	100,100
100									90-100			
110									100-110			
120									110-120			
130									120-130			
140									130-140			
150									140-150			
160									150-160			
170									160-170			
180									170-180			
DEG	LUMINOUS INTENSITY:cd									UNIT:lm		

C Range: 0 - 360DEG  
 C Interval: 22.5DEG  
 Test Speed: HIGH  
 Temperature:24.3℃  
 Operators:  
 Test Date:2024-04-01

$\gamma$  Range: 0 - 90DEG  
 $\gamma$  Interval: 1.0DEG  
 Test System:EVERFINE GO-SPEX500\_V1 SYSTEM V2.00.460  
 Humidity:65.0%  
 Test Distance:3.080m [K=1.0000]  
 Remarks:

LUMINANCE LIMITATION CURVES

Test:U:119.83V I:0.1006A P:11.614W PF:0.9635 Freq:59.98Hz		
UTHDi:0.00% ITHDi:0.00% KDisp:0 Lamp Flux:951.003x1 lm		
NAME: VO-RP6W12-120-D-5WAY	TYPE:	WEIGHT:
SPEC.: 2700K 80	DIM.:	SERIAL No.:
MFR.: VOTATEC	SUR.:	Shielding Angle:



LUMINANCE cd/(m2)		
G (DEG)	C0/180	C90/270
85	1107	2049
80	1832	2175
75	2164	2326
70	2375	2452
65	2500	2548
60	2603	2633
55	2683	2702
50	2749	2760
45	2810	2813

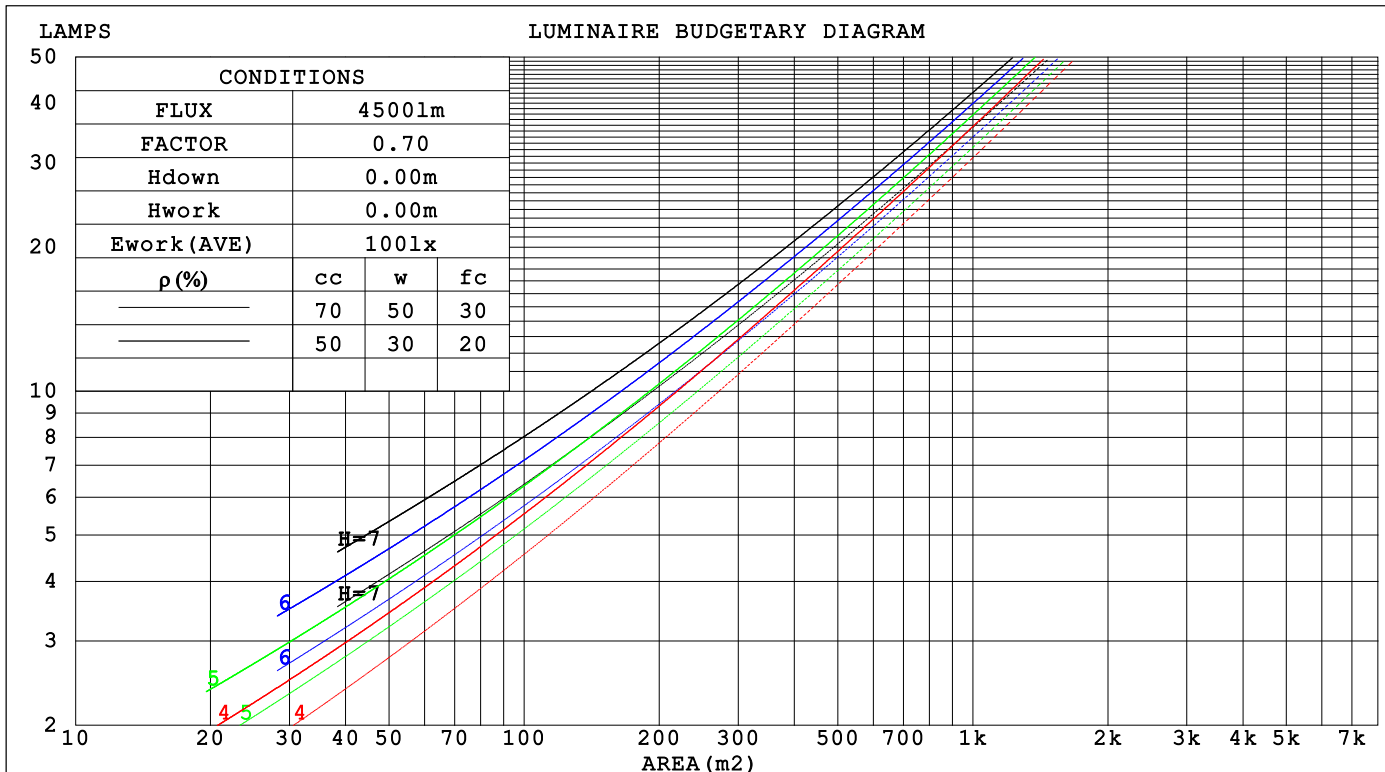
C Range: 0 - 360DEG  
C Interval: 22.5DEG  
Test Speed: HIGH  
Temperature:24.3℃  
Operators:  
Test Date:2024-04-01

γ Range: 0 - 90DEG  
γ Interval: 1.0DEG  
Test System:EVERFINE GO-SPEX500\_V1 SYSTEM V2.00.460  
Humidity:65.0%  
Test Distance:3.080m [K=1.0000]  
Remarks:

## CU AND LUMINAIRE BUDGETARY ESTIMATE DIAGRAM

Test:U:119.83V I:0.1006A P:11.614W PF:0.9635 Freq:59.98Hz		
UTHDi:0.00% ITHDi:0.00% KDisp:0 Lamp Flux:951.003x1 lm		
NAME: VO-RP6W12-120-D-5WAY	TYPE:	WEIGHT:
SPEC.: 2700K 80	DIM.:	SERIAL No.:
MFR.: VOTATEC	SUR.:	Shielding Angle:

ρcc	80%			70%			50%			30%			10%			0
ρw	50%	30%	10%	50%	30%	10%	50%	30%	10%	50%	30%	10%	50%	30%	10%	0
ρfc	20%			20%			20%			20%			20%			0
RCR	RCR:Room Cavity Ratio			Coefficients of Utilization(CU)												
0.0	1.19	1.19	1.19	1.16	1.16	1.16	1.11	1.11	1.11	1.06	1.06	1.06	1.02	1.02	1.02	1.00
1.0	1.04	.00	.96	1.02	.98	.94	.97	.94	.91	.93	.91	.88	.90	.88	.86	.84
2.0	.90	.84	.78	.89	.82	.77	.85	.80	.75	.82	.77	.73	.79	.75	.72	.70
3.0	.79	.71	.65	.78	.70	.64	.75	.68	.63	.72	.66	.62	.69	.65	.61	.58
4.0	.70	.61	.55	.69	.61	.54	.66	.59	.54	.64	.58	.53	.62	.57	.52	.50
5.0	.63	.54	.47	.62	.53	.47	.59	.52	.46	.57	.51	.46	.56	.50	.45	.43
6.0	.56	.47	.41	.56	.47	.41	.54	.46	.40	.52	.45	.40	.50	.44	.40	.38
7.0	.51	.42	.36	.50	.42	.36	.49	.41	.36	.47	.41	.36	.46	.40	.35	.33
8.0	.47	.38	.32	.46	.38	.32	.45	.37	.32	.43	.37	.32	.42	.36	.32	.30
9.0	.43	.35	.29	.42	.34	.29	.41	.34	.29	.40	.33	.29	.39	.33	.29	.27
10.0	.40	.32	.26	.39	.31	.26	.38	.31	.26	.37	.31	.26	.36	.30	.26	.24



C Range: 0 - 360DEG  
C Interval: 22.5DEG  
Test Speed: HIGH  
Temperature:24.3℃  
Operators:  
Test Date:2024-04-01

γ Range: 0 - 90DEG  
γ Interval: 1.0DEG  
Test System:EVERFINE GO-SPEX500\_V1 SYSTEM V2.00.460  
Humidity:65.0%  
Test Distance:3.080m [K=1.0000]  
Remarks:

### WEC AND CCEC

Test:U:119.83V I:0.1006A P:11.614W PF:0.9635 Freq:59.98Hz			UTHDi:0.00% ITHDi:0.00% KDisp:0			Lamp Flux:951.003x1 lm		
NAME: VO-RP6W12-120-D-5WAY			TYPE:			WEIGHT:		
SPEC.: 2700K 80			DIM.:			SERIAL No.:		
MFR.: VOTATEC			SUR.:			Shielding Angle:		

pcc	80%			70%			50%			30%			10%			0	
pw	50%	30%	10%	50%	30%	10%	50%	30%	10%	50%	30%	10%	50%	30%	10%	0	
pfc	20%			20%			20%			20%			20%			0	
RCR	RCR:Room Cavity Ratio						Wall Exitance Coefficients(WEC)										
0.0																	
1.0	.310	.176	.056	.303	.173	.055	.289	.166	.053	.277	.160	.051	.266	.154	.050		
2.0	.292	.160	.049	.285	.157	.048	.274	.152	.047	.263	.148	.046	.253	.143	.045		
3.0	.270	.144	.043	.265	.142	.043	.254	.138	.042	.245	.134	.041	.236	.130	.040		
4.0	.249	.129	.038	.244	.128	.038	.235	.125	.037	.227	.122	.037	.219	.119	.036		
5.0	.230	.117	.034	.226	.116	.034	.218	.113	.033	.210	.111	.033	.203	.109	.033		
6.0	.214	.107	.031	.210	.106	.030	.202	.104	.030	.196	.102	.030	.189	.100	.030		
7.0	.199	.098	.028	.195	.097	.028	.189	.095	.028	.183	.094	.027	.177	.092	.027		
8.0	.186	.091	.026	.183	.090	.025	.177	.088	.025	.171	.087	.025	.166	.085	.025		
9.0	.174	.084	.023	.171	.083	.023	.166	.082	.023	.161	.081	.023	.156	.079	.023		
10.0	.164	.078	.022	.161	.078	.022	.156	.077	.022	.152	.075	.021	.148	.074	.021		

pcc	80%			70%			50%			30%			10%			0	
pw	50%	30%	10%	50%	30%	10%	50%	30%	10%	50%	30%	10%	50%	30%	10%	0	
pfc	20%			20%			20%			20%			20%			0	
RCR	RCR:Room Cavity Ratio						Ceiling Cavity Exitance Coefficients (CCEC)										
0.0	.190	.190	.190	.163	.163	.163	.111	.111	.111	.064	.064	.064	.020	.020	.020		
1.0	.180	.156	.134	.154	.134	.116	.106	.092	.080	.061	.053	.047	.019	.017	.015		
2.0	.172	.132	.098	.148	.114	.085	.101	.079	.059	.058	.046	.035	.019	.015	.011		
3.0	.164	.114	.074	.141	.099	.064	.097	.068	.045	.056	.040	.027	.018	.013	.009		
4.0	.157	.101	.058	.135	.087	.051	.093	.061	.036	.054	.036	.021	.017	.012	.007		
5.0	.149	.091	.047	.128	.078	.041	.088	.055	.029	.051	.032	.017	.016	.010	.006		
6.0	.142	.082	.039	.122	.071	.034	.084	.050	.024	.049	.029	.014	.016	.010	.005		
7.0	.135	.075	.033	.116	.065	.029	.080	.046	.021	.047	.027	.012	.015	.009	.004		
8.0	.129	.070	.029	.111	.060	.025	.077	.042	.018	.045	.025	.011	.014	.008	.004		
9.0	.123	.065	.025	.106	.056	.022	.073	.039	.016	.043	.023	.009	.014	.008	.003		
10.0	.117	.060	.022	.101	.052	.020	.070	.037	.014	.041	.022	.008	.013	.007	.003		

C Range: 0 - 360DEG  
C Interval: 22.5DEG  
Test Speed: HIGH  
Temperature:24.3℃  
Operators:  
Test Date:2024-04-01

γ Range: 0 - 90DEG  
γ Interval: 1.0DEG  
Test System:EVERFINE GO-SPEX500\_V1 SYSTEM V2.00.460  
Humidity:65.0%  
Test Distance:3.080m [K=1.0000]  
Remarks:

### UGR(Unified Glare Rating) Table

Test:U:119.83V I:0.1006A P:11.614W PF:0.9635 Freq:59.98Hz UTHDi:0.00% ITHDi:0.00% KDisp:0 Lamp Flux:951.003x1 lm										
NAME: VO-RP6W12-120-D-5WAY					TYPE:			WEIGHT:		
SPEC.: 2700K 80					DIM.:			SERIAL No.:		
MFR.: VOTATEC					SUR.:			Shielding Angle:		
ceiling/cavity	0.7	0.7	0.5	0.5	0.3	0.7	0.7	0.5	0.5	0.3
walls	0.5	0.3	0.5	0.3	0.3	0.5	0.3	0.5	0.3	0.3
working plane	0.2	0.2	0.2	0.2	0.2	0.2	0.2	0.2	0.2	0.2
Room dimensions	Viewed crosswise					Viewed endwise				
x = 2H y = 2H	16.5	18.0	16.8	18.2	18.5	16.6	18.1	16.8	18.3	18.5
3H	18.0	19.4	18.3	19.7	19.9	18.1	19.5	18.4	19.8	20.0
4H	18.6	20.0	18.9	20.2	20.5	18.8	20.1	19.1	20.4	20.6
6H	19.0	20.3	19.4	20.6	20.8	19.3	20.5	19.6	20.8	21.1
8H	19.1	20.3	19.5	20.6	20.9	19.4	20.7	19.8	20.9	21.2
12H	19.1	20.3	19.5	20.6	20.9	19.6	20.7	19.9	21.0	21.3
4H 2H	17.2	18.5	17.5	18.7	19.0	17.2	18.5	17.5	18.8	19.0
3H	18.9	20.0	19.2	20.3	20.6	19.0	20.1	19.3	20.4	20.7
4H	19.6	20.7	20.0	21.0	21.3	19.7	20.8	20.1	21.1	21.5
6H	20.1	21.1	20.5	21.4	21.8	20.4	21.3	20.8	21.7	22.0
8H	20.2	21.1	20.7	21.5	21.9	20.6	21.5	21.0	21.8	22.2
12H	20.3	21.1	20.7	21.5	21.9	20.8	21.6	21.2	22.0	22.4
8H 4H	19.9	20.8	20.3	21.1	21.5	20.0	20.9	20.4	21.3	21.7
6H	20.5	21.3	21.0	21.7	22.1	20.8	21.5	21.2	21.9	22.4
8H	20.8	21.4	21.2	21.9	22.3	21.1	21.8	21.6	22.2	22.7
12H	20.9	21.4	21.4	21.9	22.4	21.4	22.0	21.9	22.4	22.9
12H 4H	19.9	20.7	20.3	21.1	21.5	20.0	20.8	20.5	21.2	21.6
6H	20.6	21.3	21.1	21.7	22.1	20.9	21.5	21.3	21.9	22.4
8H	20.9	21.4	21.4	21.9	22.4	21.2	21.8	21.7	22.2	22.7
Variations with the observer position at spacings(CIE Pub.117):										
S = 1.0H	+ 0.2 / - 0.2					+ 0.1 / - 0.2				
1.5H	+ 0.2 / - 0.3					+ 0.2 / - 0.3				
2.0H	+ 0.2 / - 0.3					+ 0.1 / - 0.3				

CIE Pub.117, 951.0 lm Total Lamp Luminous Flux Correct (8log(F/F0) = -0.2)  
Area: 0.111111 m2

C Range: 0 - 360DEG  
C Interval: 22.5DEG  
Test Speed: HIGH  
Temperature:24.3℃  
Operators:  
Test Date:2024-04-01

γ Range: 0 - 90DEG  
γ Interval: 1.0DEG  
Test System:EVERFINE GO-SPEX500\_V1 SYSTEM V2.00.460  
Humidity:65.0%  
Test Distance:3.080m [K=1.0000]  
Remarks:

### UTILIZATION FACTORS TABLE

Test:U:119.83V I:0.1006A P:11.614W PF:0.9635 Freq:59.98Hz UTHDi:0.00% ITHDi:0.00% KDisp:0 Lamp Flux:951.003x1 lm		
NAME: VO-RP6W12-120-D-5WAY	TYPE:	WEIGHT:
SPEC.: 2700K 80	DIM.:	SERIAL No.:
MFR.: VOTATEC	SUR.:	Shielding Angle:

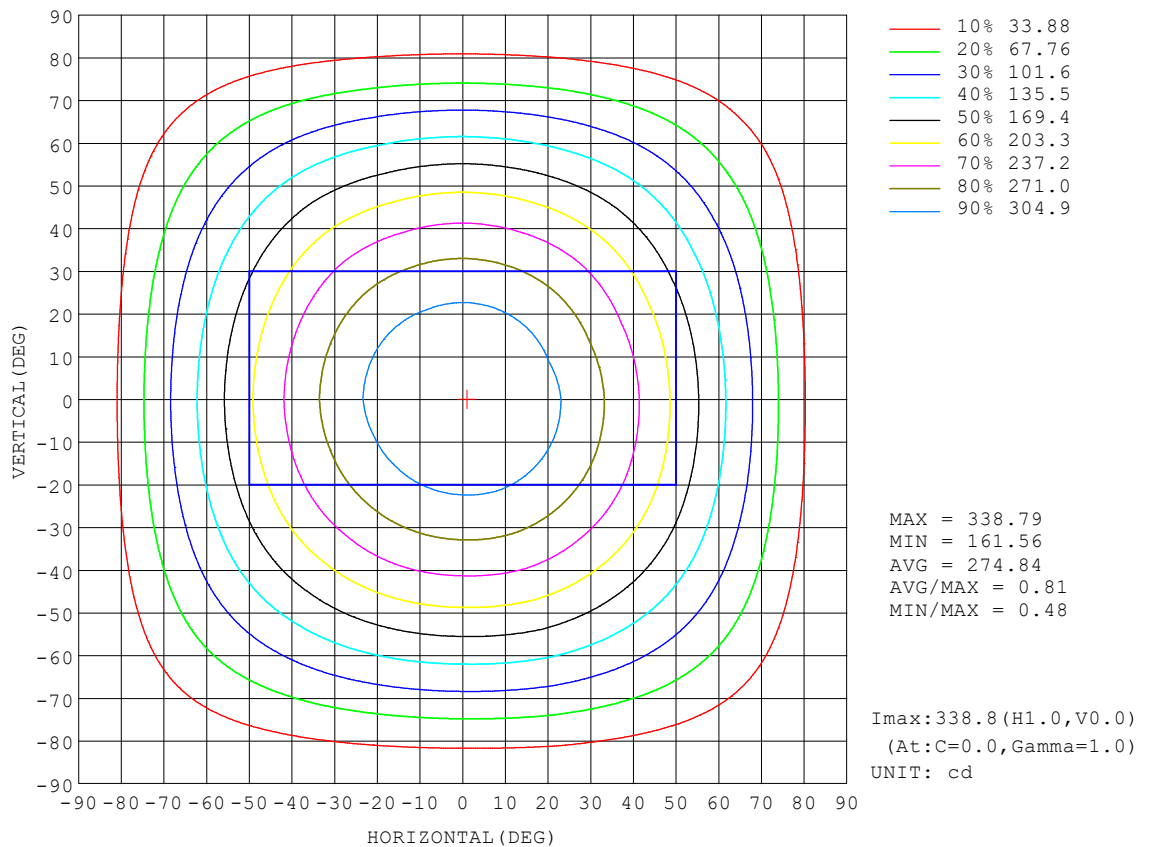
REFLECTANCE										
Ceiling	0.8	0.8	0.8	0.7	0.7	0.7	0.5	0.5	0.5	0
Walls	0.7	0.5	0.3	0.7	0.5	0.3	0.7	0.5	0.3	0
Working plane	0.2	0.2	0.2	0.2	0.2	0.2	0.2	0.2	0.2	0
ROOM INDEX	UTILIZATION FACTORS (PERCENT) $k(RI) \times RCR = 5$									
$k = 0.60$	58	46	39	57	46	39	56	45	39	32
0.80	68	56	49	67	56	48	65	55	48	41
1.00	76	65	58	75	64	57	73	66	57	50
1.25	83	73	65	82	72	65	79	70	64	57
1.50	88	78	71	86	77	71	83	76	70	62
2.00	95	86	80	93	85	79	90	83	78	70
2.50	99	91	85	97	90	84	93	87	82	74
3.00	102	95	90	100	94	89	96	91	87	78
4.00	106	101	96	104	99	95	100	95	92	83
5.00	109	104	100	106	102	98	102	98	95	86
ROOM INDEX	UF (total)									Direct
According to DIN EN 13032-2 2004			Suspended					SHRNOM = 1.25		

C Range: 0 - 360DEG  
C Interval: 22.5DEG  
Test Speed: HIGH  
Temperature: 24.3°C  
Operators:  
Test Date: 2024-04-01

γ Range: 0 - 90DEG  
γ Interval: 1.0DEG  
Test System: EVERFINE GO-SPEX500\_V1 SYSTEM V2.00.460  
Humidity: 65.0%  
Test Distance: 3.080m [K=1.0000]  
Remarks:

### ISOCANDELA DIAGRAM

Test:U:119.83V I:0.1006A P:11.614W PF:0.9635 Freq:59.98Hz UTHDi:0.00% ITHDi:0.00% KDisp:0 Lamp Flux:951.003x1 lm		
NAME: VO-RP6W12-120-D-5WAY	TYPE:	WEIGHT:
SPEC.: 2700K 80	DIM.:	SERIAL No.:
MFR.: VOTATEC	SUR.:	Shielding Angle:



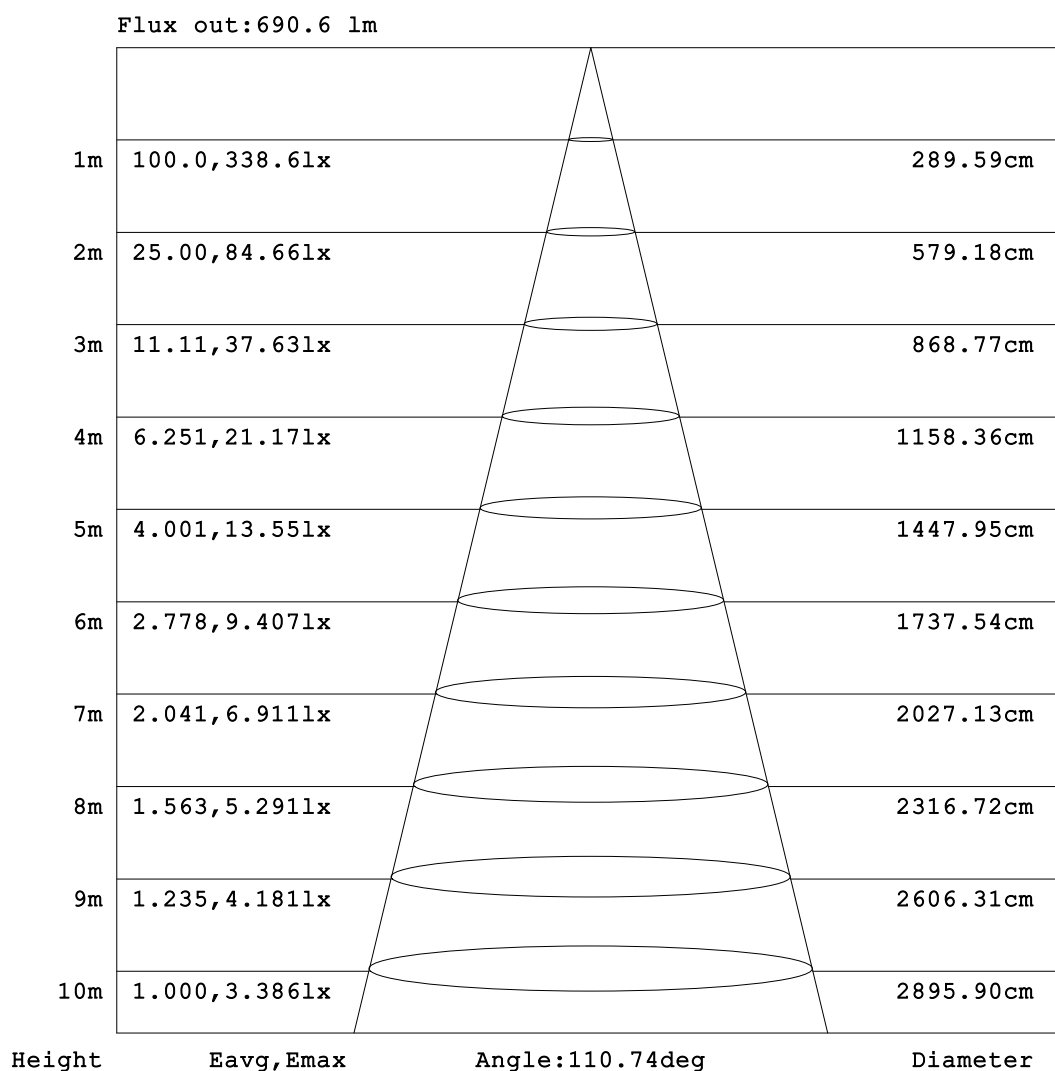
C Range: 0 - 360DEG  
C Interval: 22.5DEG  
Test Speed: HIGH  
Temperature:24.3℃  
Operators:  
Test Date:2024-04-01

γ Range: 0 - 90DEG  
γ Interval: 1.0DEG  
Test System:EVERFINE GO-SPEX500\_V1 SYSTEM V2.00.460  
Humidity:65.0%  
Test Distance:3.080m [K=1.0000]  
Remarks:



### AAI Figure

Test:U:119.83V I:0.1006A P:11.614W PF:0.9635 Freq:59.98Hz UTHDi:0.00% ITHDi:0.00% KDisp:0 Lamp Flux:951.003x1 lm		
NAME: VO-RP6W12-120-D-5WAY	TYPE:	WEIGHT:
SPEC.: 2700K 80	DIM.:	SERIAL No.:
MFR.: VOTATEC	SUR.:	Shielding Angle:



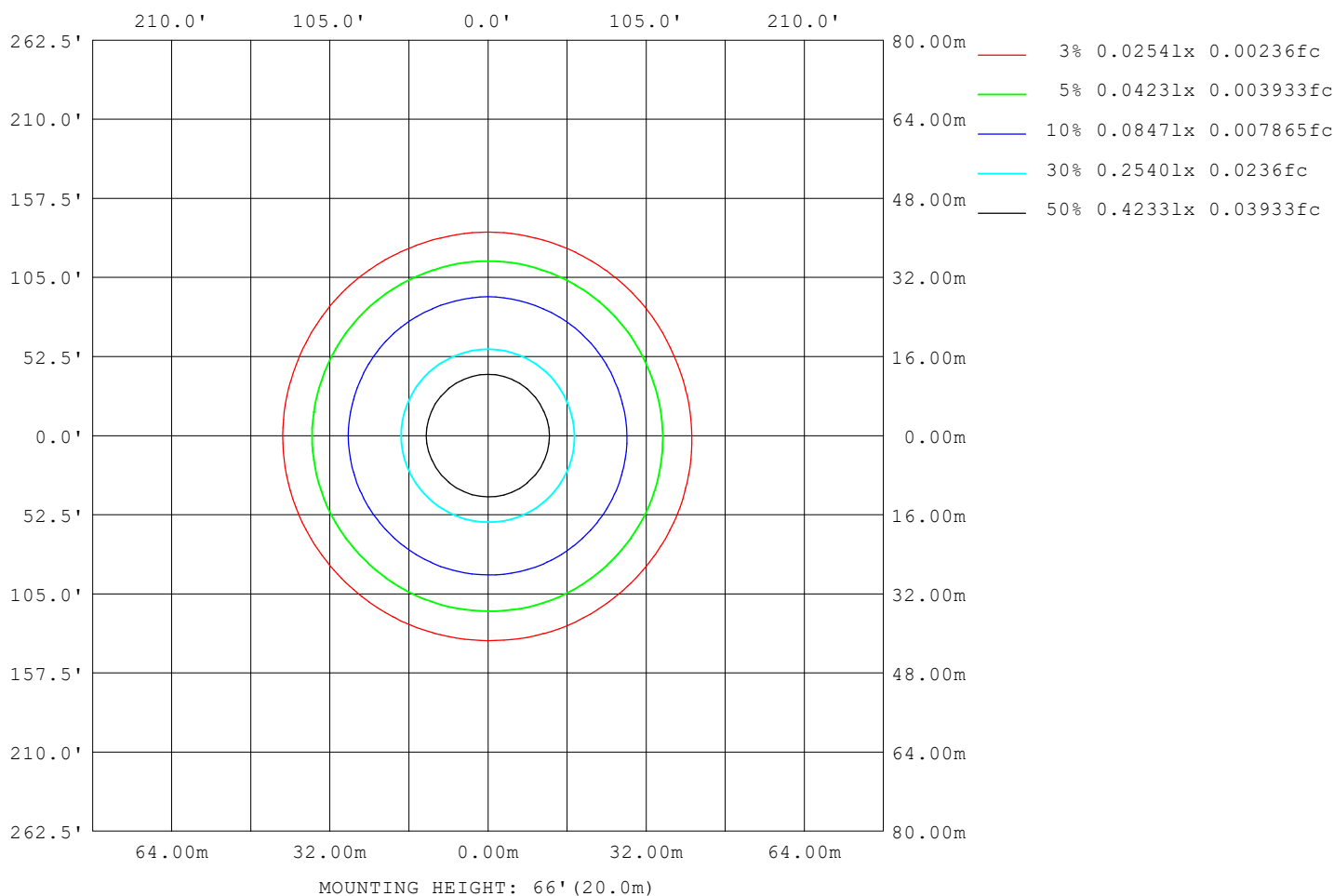
Note:The Curves indicate the illuminated area and the average illumination when the luminaire is at different distance.

C Range: 0 - 360DEG  
C Interval: 22.5DEG  
Test Speed: HIGH  
Temperature:24.3℃  
Operators:  
Test Date:2024-04-01

γ Range: 0 - 90DEG  
γ Interval: 1.0DEG  
Test System:EVERFINE GO-SPEX500\_V1 SYSTEM V2.00.460  
Humidity:65.0%  
Test Distance:3.080m [K=1.0000]  
Remarks:

### ISOLUX DIAGRAM

Test:U:119.83V I:0.1006A P:11.614W PF:0.9635 Freq:59.98Hz UTHDi:0.00% ITHDi:0.00% KDisp:0 Lamp Flux:951.003x1 lm		
NAME: VO-RP6W12-120-D-5WAY	TYPE:	WEIGHT:
SPEC.: 2700K 80	DIM.:	SERIAL No.:
MFR.: VOTATEC	SUR.:	Shielding Angle:



C Range: 0 - 360DEG  
C Interval: 22.5DEG  
Test Speed: HIGH  
Temperature:24.3℃  
Operators:  
Test Date:2024-04-01

γ Range: 0 - 90DEG  
γ Interval: 1.0DEG  
Test System:EVERFINE GO-SPEX500\_V1 SYSTEM V2.00.460  
Humidity:65.0%  
Test Distance:3.080m [K=1.0000]  
Remarks:

## LED Avg.L Report

Test:U:119.83V I:0.1006A P:11.614W PF:0.9635 Freq:59.98Hz UTHDi:0.00% ITHDi:0.00% KDisp:0 Lamp Flux:951.003x1 lm		
NAME: VO-RP6W12-120-D-5WAY	TYPE:	WEIGHT:
SPEC.: 2700K 80	DIM.:	SERIAL No.:
MFR.: VOTATEC	SUR.:	Shielding Angle:

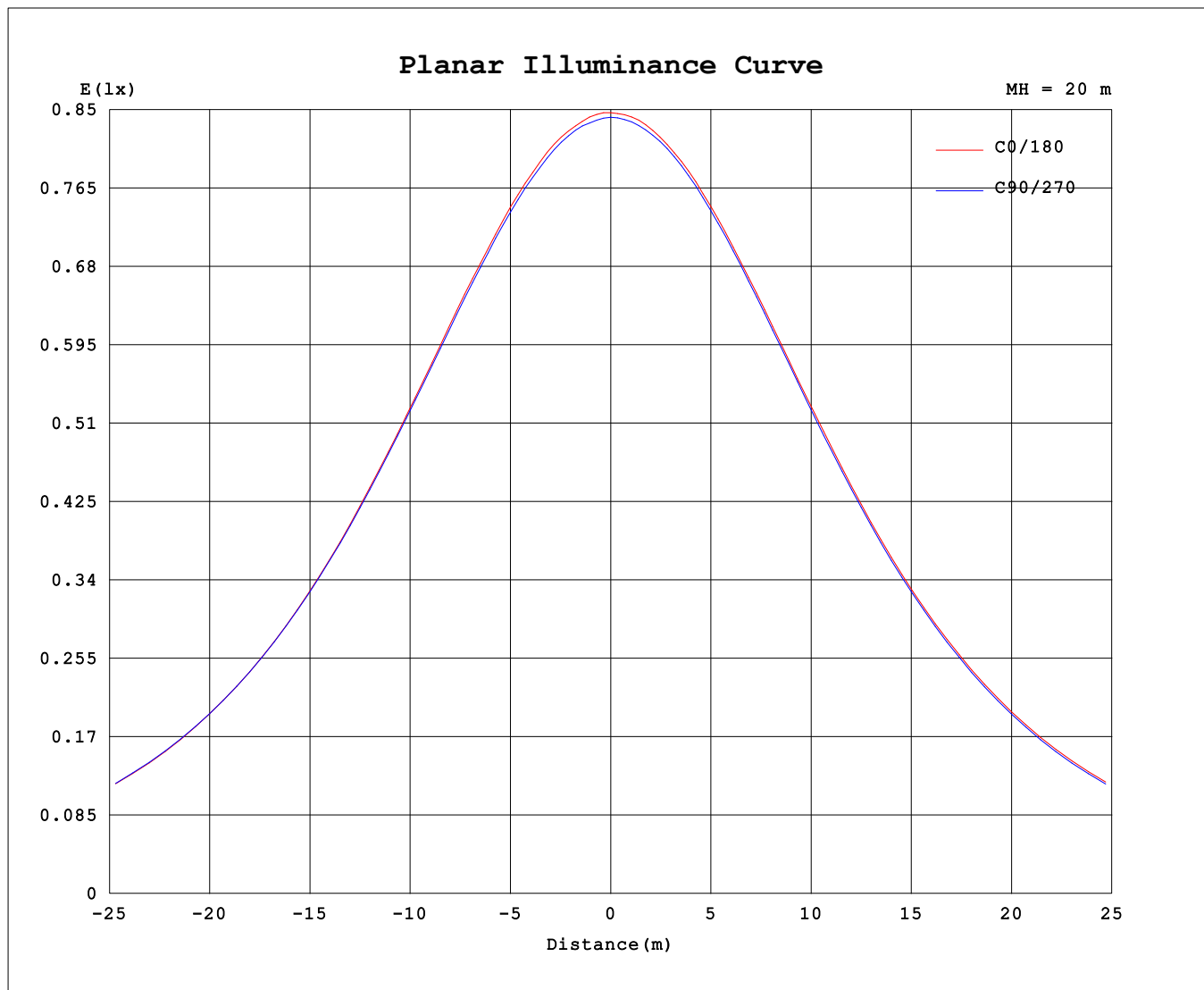
AvgL	cd/m2
L_0~180 (65) av	2519
L_0~180 (75) av	2218
L_0~180 (85) av	1244
L_90~270 (65) av	2517
L_90~270 (75) av	2257
L_90~270 (85) av	1856
L_45 (65) av	2517
L_45 (75) av	2244
L_45 (85) av	1500

Standard: GB/T 29293-2012

C Range: 0 - 360DEG  
C Interval: 22.5DEG  
Test Speed: HIGH  
Temperature:24.3℃  
Operators:  
Test Date:2024-04-01

γ Range: 0 - 90DEG  
γ Interval: 1.0DEG  
Test System:EVERFINE GO-SPEX500\_V1 SYSTEM V2.00.460  
Humidity:65.0%  
Test Distance:3.080m [K=1.0000]  
Remarks:

### Planar Illuminance Curve



C Range: 0 - 360DEG  
 C Interval: 22.5DEG  
 Test Speed: HIGH  
 Temperature: 24.3 °C  
 Operators:  
 Test Date: 2024-04-01

γ Range: 0 - 90DEG  
 γ Interval: 1.0DEG  
 Test System: EVERFINE GO-SPEX500\_V1 SYSTEM V2.00.460  
 Humidity: 65.0%  
 Test Distance: 3.080m [K=1.0000]  
 Remarks:

```

γ Range: 0 - 90DEG
γ Interval: 1.0DEG
Test System:EVERFINE GO-SPEX500_V1 SYSTEM V2.00.460
Humidity:65.0%
Test Distance:3.080m [K=1.0000]
Remarks:

```